

FP Collection

HAT - MANI - PALM - SHARP - SIMPLE - STRIKE



973

Resistenza al fuoco / *Flame resistance*

EN 1021-1/2
BS 5852 (2-5)
CA TB 117-2013
DIN 4102 B2
Önorm B1/Q1
NFD 60 013
UNI 9175 1IM
AS.NZS 1530.3
IMO FTP Code 2010 (8)

Solidità alla luce / *Light fastness*

UNI EN ISO 105-B02 (5-7)

Resistenza all'abrasione / *Abrasion resistance*

UNI EN ISO 12947 (≈ 45.000 Martindale)

Solidità allo sfregamento / *Fastness to rubbing*

UNI EN ISO 105-X12 (a secco/dry rubbing 4-5)
UNI EN ISO 105-X12 (a umido/wet rubbing 4)

Pilling

UNI EN ISO 12945 (3)

kvadrat

For further information
kvadrat.dk

DIVINA MD

Tipologia: lana

Composizione: 100% lana vergine

Larghezza: 150 cm

Peso: 820 g/mtl

Design: Finn Sködt

Pulizia e manutenzione: contattare
il fornitore al sito www.kvadrat.dk.

Type: wool

Composition: 100% new wool

Width: 150 cm

Weight: 820 g/lm

Design: Finn Sködt

Cleaning and maintenance: contact the
supplier through website www.kvadrat.dk.

Note

Leggere differenze di colore fra una partita
e l'altra sono da considerarsi normali

Notes

Light colour differences between lots must
be considered normal



203



343



353



193



413



453



363



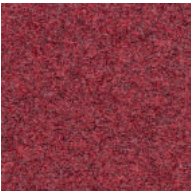
433



613



633



653



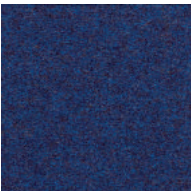
673



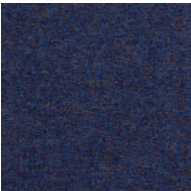
683



783



773



753



743



733



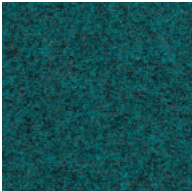
713



813



873



843



943



913



042

Resistenza al fuoco / Flame resistance
EN 1021-1/2
IMO A.652(16)

Solidità alla luce / Light fastness
UNI EN ISO 105-B02 (5)

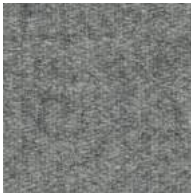
Resistenza all'abrasione / Abrasion resistance
UNI EN ISO 12947 12kpa (≈ 80.000 Martindale)

Pilling
UNI EN ISO 1512434 0 (3)

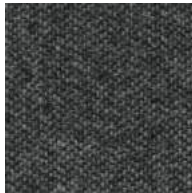
ST. MORITZ

Tipologia: lana
Composizione: 80% lana, 20% poliammide
Larghezza: 140 cm
Peso: 440 g/mtl
Pulizia e manutenzione: contattare
il fornitore al sito www.linterno.it.

Type: wool
Composition: 80% wool, 20% polyamide
Width: 140 cm
Weight: 440 g/lm
Cleaning and maintenance: contact the
supplier through website www.linterno.it.



155



159



162



163



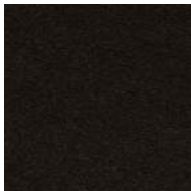
001



005



025



081



047



034



038



099



130



142



148



091



108



075



078



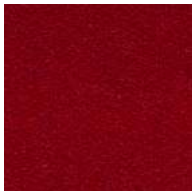
122



059



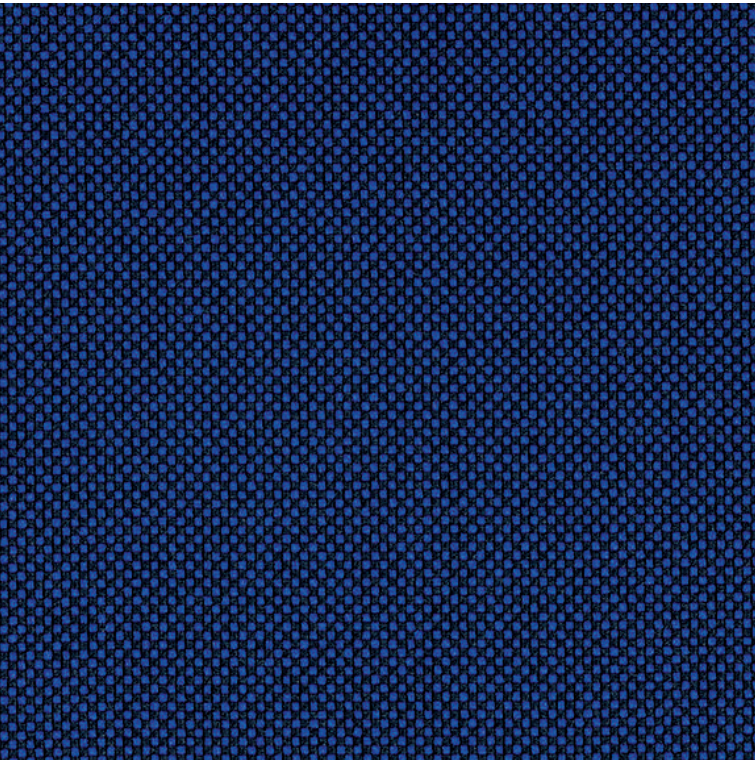
064



069



067



66136

Resistenza al fuoco / Flame resistance

EN 1021-1/2
BS 5852 (O,1-5)
CA TB 117-2013
BS 7176
DIN 4102 B1
DIN EN 13501-1 B-s1,d0
NFP 92-503/504/505 M1
ÖNORM B1/Q1
UNI 9175 1IM
FAR/JAR 25.853 (a) (i) (ii)

Solidità alla luce / Light fastness

UNI EN ISO 105-B02 (5-8)

Resistenza all'abrasione / Abrasion resistance

UNI EN ISO 12947-2 (≈ 80.000 Martindale)

Solidità allo sfregamento / Fastness to rubbing

UNI EN ISO 105-X12 (a secco/dry rubbing 4-5)
UNI EN ISO 105-X12 (a umido/wet rubbing 4-5)

Pilling

UNI EN ISO 12945-2 (5)

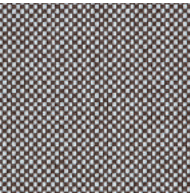
Gabriel®

For further information
gabriel.dk

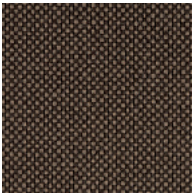
GO CHECK

Tipologia: trevira
Composizione: 100% poliestere (Trevira cs)
Larghezza: 140 cm
Peso: 435 g/mtl
Design: Inger Mosholt Nielsen
Pulizia e manutenzione: contattare il fornitore al sito www.gabriel.dk.

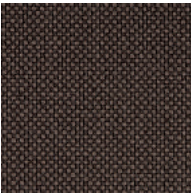
Type: trevira
Composition: 100% polyester (Trevira cs)
Width: 140 cm
Weight: 435 g/lm
Design: Inger Mosholt Nielsen
Cleaning and maintenance: contact the supplier through website www.gabriel.dk.



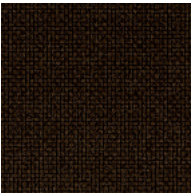
60079



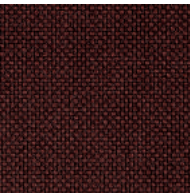
61139



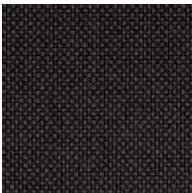
61140



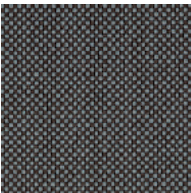
61141



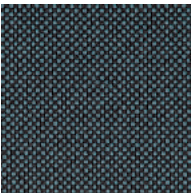
61145



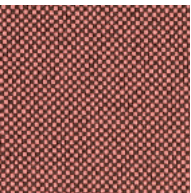
60084



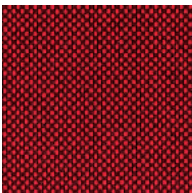
60083



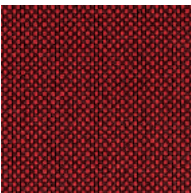
60081



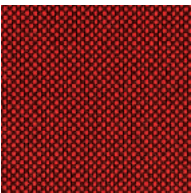
64183



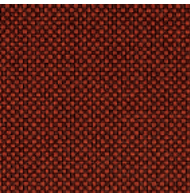
64175



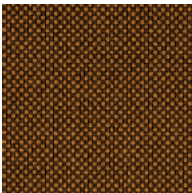
64172



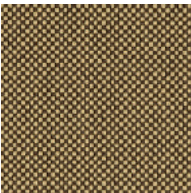
64171



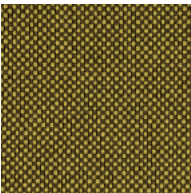
61144



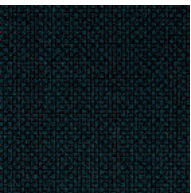
61143



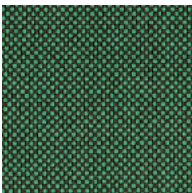
61142



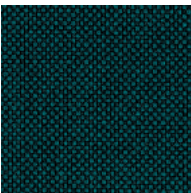
62071



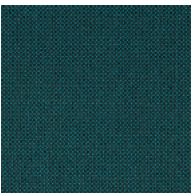
68149



68169



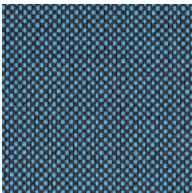
68152



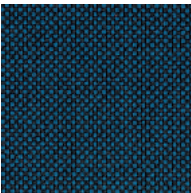
67071



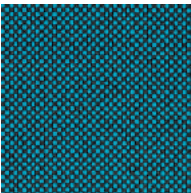
66140



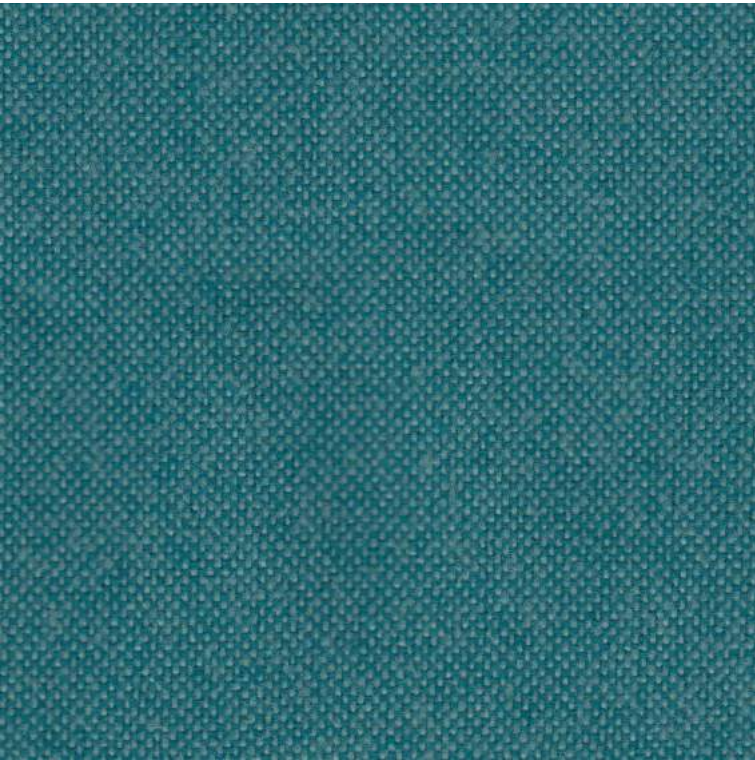
66135



66139



67070



9609

Resistenza al fuoco / Flame resistance

EN 1021-1/2
BS 5852-2 (5)
BS 7176
DIN 4102 B1
NFP 92501-7 M1
NFD 60 013
UNI 9174 - UNI 845 C1
IMO A.652(16)
IMO B (5)-(7)-(8)

Solidità alla luce / Light fastness

UNI EN ISO 105-B02 (6)

Resistenza all'abrasione / Abrasion resistance

UNI EN ISO 12947-2 (≈ 65.000 Martindale)

Solidità allo sfregamento / Fastness to rubbing

UNI EN ISO 105-X12 (a secco/dry rubbing 4-5)
UNI EN ISO 105-X12 (a umido/wet rubbing 4-5)

Pilling

UNI EN ISO 12945-2 (5)

FIDIVI*

For further information
fidivi.com

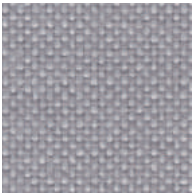
JET

Tipologia: trevira
Composizione: 100% poliestere (Trevira cs)
Larghezza: 140 cm
Peso: 365 g/mtl
Pulizia e manutenzione: contattare
il fornitore al sito www.fidivi.com.

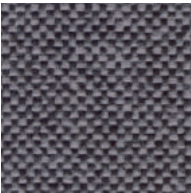
Type: trevira
Composition: 100% polyester (Trevira cs)
Width: 140 cm
Weight: 365 g/lm
Cleaning and maintenance: contact the
supplier through website www.fidivi.com.



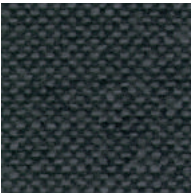
8001



9803



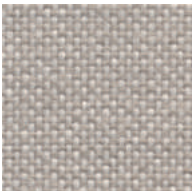
9294



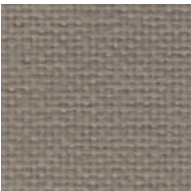
9806



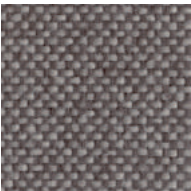
1001



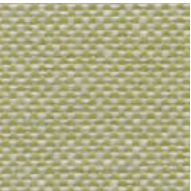
9110



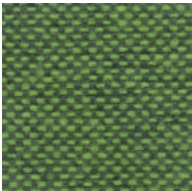
2024



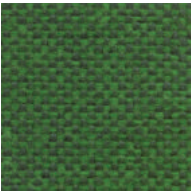
9109



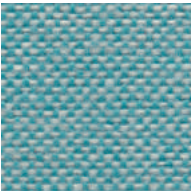
9701



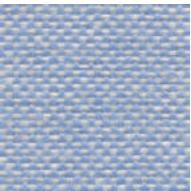
9702



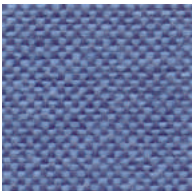
9704



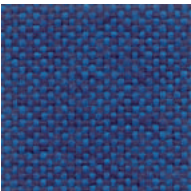
9610



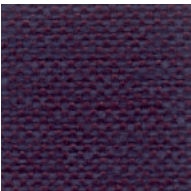
9600



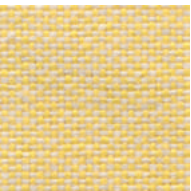
9601



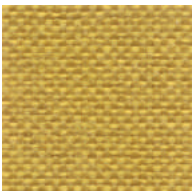
9603



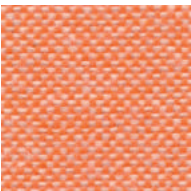
9607



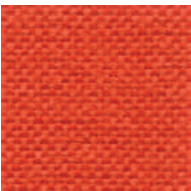
9302



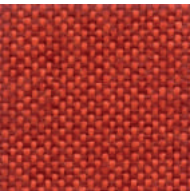
9304



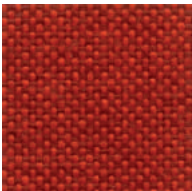
9301



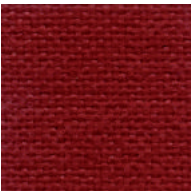
9403



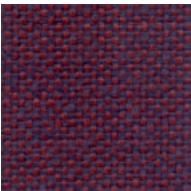
9402



9401



4018



9501



64121

Resistenza al fuoco / Flame resistance

EN 1021-1/2
BS 5852 (O,1-5)
CA TB 117-2013
BS 7176
DIN 4102 B1
NFP 92-503/504/505 M1
ÖNORM B1/Q1
UNI 9175 1IM
FAR/JAR 25.853 (a) (i) (ii)

Solidità alla luce / Light fastness

UNI EN ISO 105-B02 (5-7)

Resistenza all'abrasione / Abrasion resistance

UNI EN ISO 12947-2 (≈ 250.000 Martindale)

Solidità allo sfregamento / Fastness to rubbing

UNI EN ISO 105-X12 (a secco/dry rubbing 4-5)
UNI EN ISO 105-X12 (a umido/wet rubbing 4-5)

OBIKA LEATHER+

Tipologia: similpelle
Composizione: 66% poliuretano, 24% poliestere, 10% cotone
Larghezza: 140 cm
Peso: 1000 g/mtl
Design: Inger Mosholt Nielsen / Helene Jensen
Pulizia e manutenzione: contattare il fornitore al sito www.gabriel.dk.

Type: Faux leather
Composition: 66% polyurethane, 24% polyester, 10% cotton
Width: 140 cm
Weight: 1000 g/lm
Design: Inger Mosholt Nielsen / Helene Jensen
Cleaning and maintenance: contact the supplier through website www.gabriel.dk.



60000



61177



61178



61179



60160



60161



60999



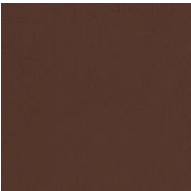
64122



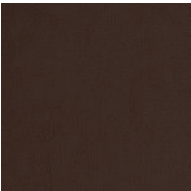
61181



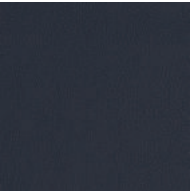
63059



63060



61182



66138



67050



67049



66139



67051



68105

Note
Leggere differenze di colore fra una partita e l'altra sono da considerarsi normali

Notes
Light colour differences between lots must be considered normal



111

Resistenza al fuoco / Flame resistance

EN 1021-1/2
BS 5852 (O-1)
CA TB 117-2013
BS 5852 IS 11 (5)
DIN 4102-1 B1
NFP 503 M1
FTP CODE 307(88):10 Annex 7-8
UNI 9175 1IM

Solidità alla luce / Light fastness

UNI EN ISO 105-B02 (≥7)

Resistenza all'abrasione / Abrasion resistance

BS EN ISO 5470-2 (≈ 200.000 Martindale)

Solidità allo sfregamento / Fastness to rubbing

UNI EN ISO 105-X12 (a secco/dry rubbing ≥5)
UNI EN ISO 105-X12 (a umido/wet rubbing ≥5)

MAGNUM

Tipologia: similpelle
Composizione: 88% polivinil cloruro,
7% poliestere, 4% cotone, 1% poliuretano
Larghezza: 140 cm
Peso: 715 g/m²
Pulizia e manutenzione: contattare
il fornitore al sito www.abitex.eu.

Type: faux leather
Composition: 88% polyvinyl chloride,
7% polyester, 4% cotton, 1% polyurethane
Width: 140 cm
Weight: 715 g/m²
Cleaning and maintenance: contact the
supplier through website www.abitex.eu.

Note
Leggere differenze di colore fra una partita
e l'altra sono da considerarsi normali

Notes
Light colour differences between lots must
be considered normal



105



603



602



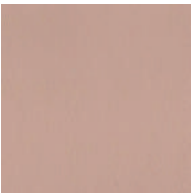
200



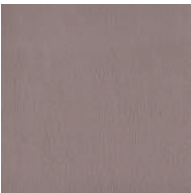
100



103



400



406



503



407



404



405



310



304



302



313



001



706



701



700



500



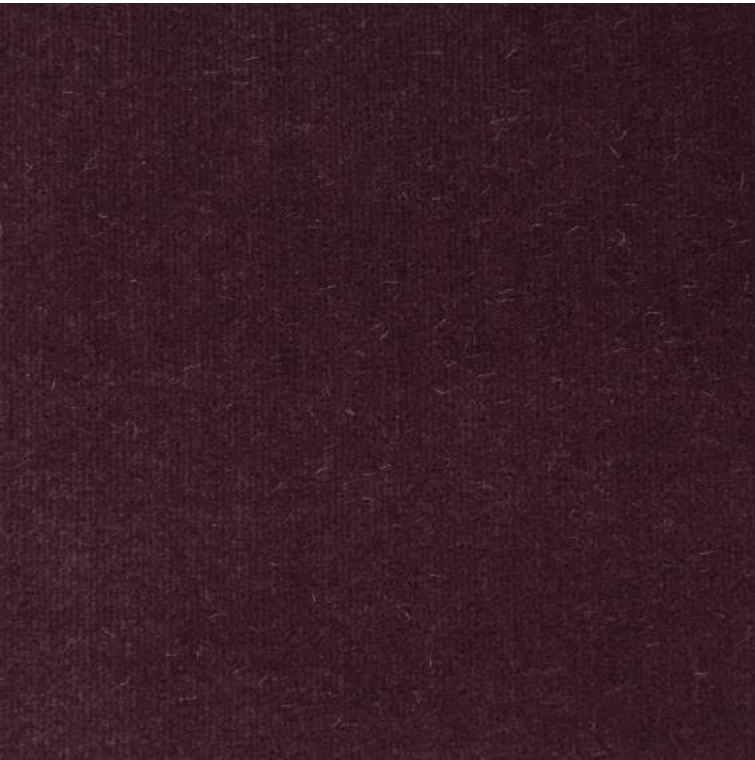
804



803



002



0530

Resistenza al fuoco / *Flame resistance*
UNI 9177 (Classe 1)
BS 5852 (Crib 5)

Solidità alla luce / *Light fastness*
UNI EN ISO 150 B02/04 (6/7)

Resistenza all'abrasione / *Abrasion resistance*
UNI EN ISO 12947-2 /00 (≈ 140.000 Martindale)

Pilling
UNI EN ISO 12945-2/02 (5)

NO_FIRE

Tipologia: velluto
Composizione: 100% trevira
Larghezza: 140 cm
Peso: 540/580 g/mtl
Pulizia e manutenzione: contattare
il fornitore al sito www.lopificio.it.

Type: velvet
Composition: 100% trevira
Width: 140 cm
Weight: 540/580 g/lm
Cleaning and maintenance: contact the
supplier through website www.lopificio.it.



0010



0312



0257



0247



0219



0236



0147



0618



0628



0246



0900



0310



0719



0720



0715



0837



0574



0505



0527



0513



0425



For further information
lopificio.it



149

Resistenza al fuoco / Flame resistance

EN 1021-1
EN 1021-2
UNI 9175 - 1IM
UNI 9177 - CLASSE 1
BS 5852 - CRIB 5
NF 92.503 - M1
DIN 4102 - B1

Solidità alla luce / Light fastness

UNI EN ISO 105-B02 (≥5)

Resistenza all'abrasione / Abrasion resistance

UNI EN ISO 12947-2 (≈ 60.000 Martindale)

Pilling

UNI EN ISO 12945-2 (5)

SUPERB

Tipologia: velluto

Composizione: 100% poliestere

Larghezza: 140 cm

Peso: 400 g/mtl

Pulizia e manutenzione: contattare
il fornitore al sito www.flukso.it.

Type: velvet

Composition: 100% polyester

Width: 140 cm

Weight: 400 g/lm

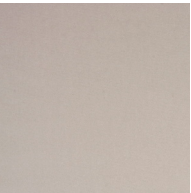
Cleaning and maintenance: contact the
supplier through website www.flukso.it.

Note

Leggere differenze di colore fra una partita
e l'altra sono da considerarsi normali

Notes

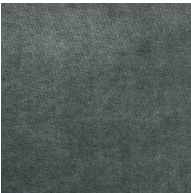
Light colour differences between lots must
be considered normal



153



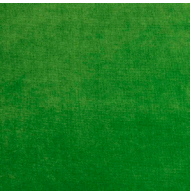
152



151



147



137



136



134



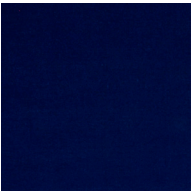
131



130



126



127



128



123



119



118



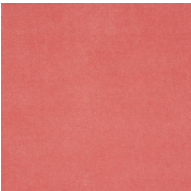
117



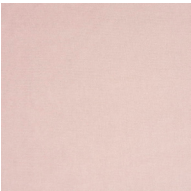
112



110



114



104



103



143



145



148



For further information
flukso.it



275 Deep

Resistenza al fuoco / Flame resistance
BS 5852:1979 Match & Cigarette test
BS EN 1021-1-2:2006 Match & Cigarette test

Solidità alla luce / Light fastness
UNI EN ISO 105 B02 >=5

Solidità allo sfregamento / Fastness to rubbing
UNI EN ISO 11640 (a secco/dry rubbing >=4)
UNI EN ISO 11640 (a umido/wet rubbing >=3/4)

PRESCOTT

Tipologia: pelle
Composizione: 100% pelle.
Pulizia e manutenzione: contattare il fornitore al sito www.mastrotto.com.

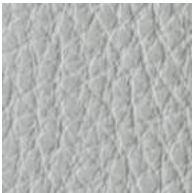
Type: leather
Composition: 100% pelle
Cleaning and maintenance: contact the supplier through website www.mastrotto.com.

Note
Leggere differenze di colore fra una partita e l'altra sono da considerarsi normali

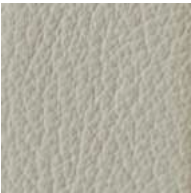
Notes
Light colour differences between lots must be considered normal



301 Dash



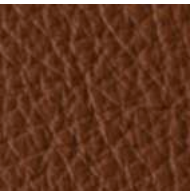
286 Zinc



200 Soul White



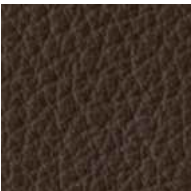
292 Caffelatte



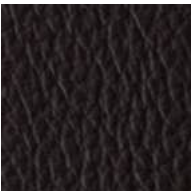
398 Horse



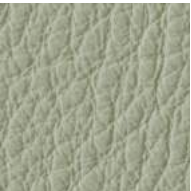
216 Antilop



217 Peatmoos



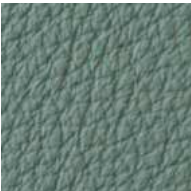
298 Root



254 Moud



256 Aloe



265 Lichene



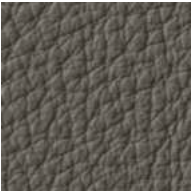
272 Morning Fog



209 Turtledove



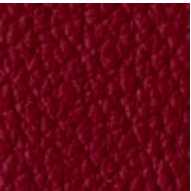
210 Graystone



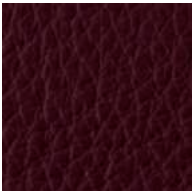
206 Smoke



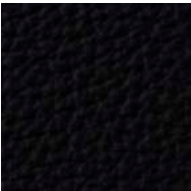
204 Iron



248 Siam



242 Wine



207 Black Ink