

FP Collection

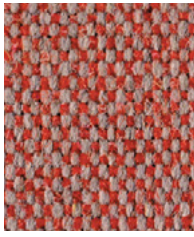
PEYO, WORK

Main Line Flax

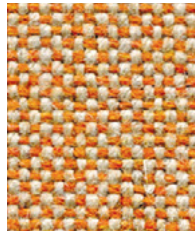
camira

Main Line Flax

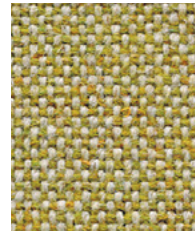
www.camirafabrics.com



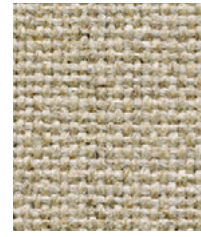
Barbican
MLF03



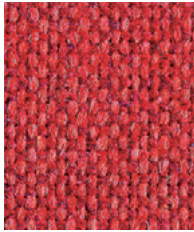
Lambeth
MLF08



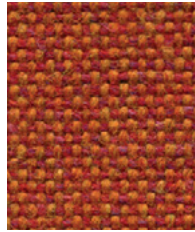
Kensington
MLF07



Upminster
MLF20



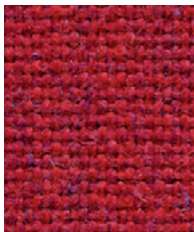
Aldgate
MLF01



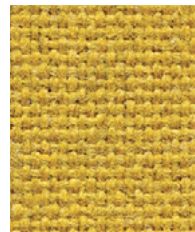
Leyton
MLF13



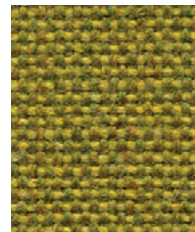
Finsbury
MLF30



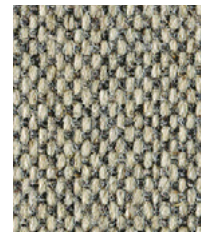
Kilburn
MLF06



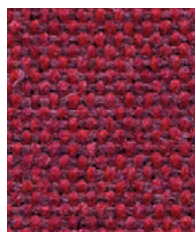
Tooting
MLF17



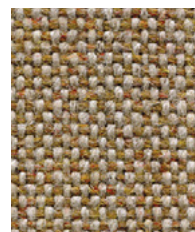
Goldhawk
MLF31



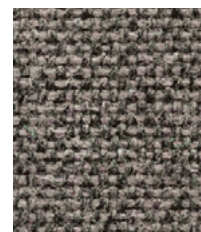
Archway
MLF02



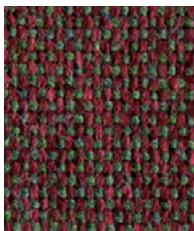
Parsons
MLF14



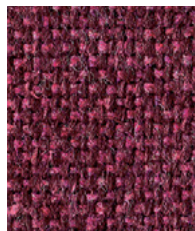
Morden
MLF12



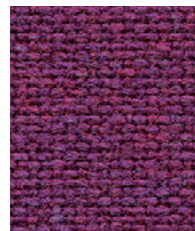
Camden
MLF26



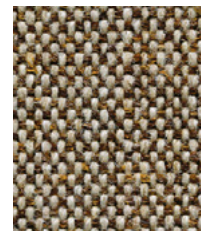
Paddington
MLF39



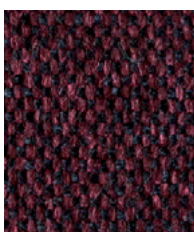
Wembley
MLF11



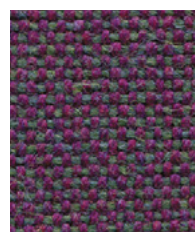
Euston
MLF04



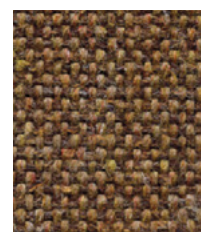
Bank
MLF23



Northfields
MLF40

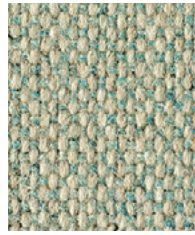


Hillingdon
MLF41

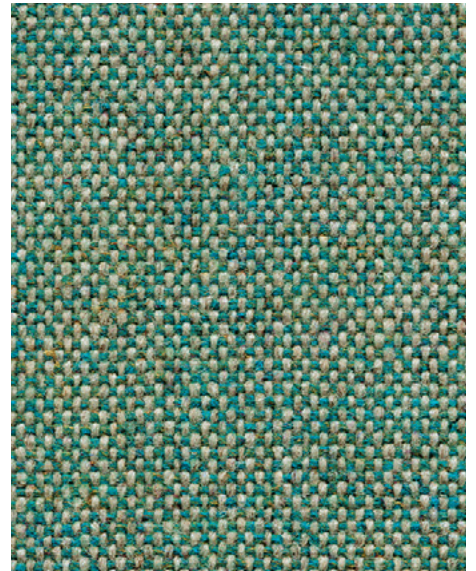


Stockwell
MLF15

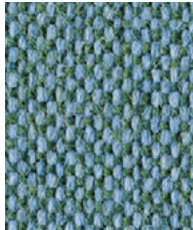
Photographic fabric scans are not colour accurate. Always request actual fabric samples before ordering.



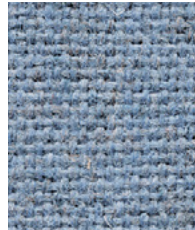
Newbury
MLF10



Bayswater
MLF24



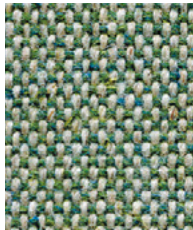
Bethnal
MLF25



Waterloo
MLF21



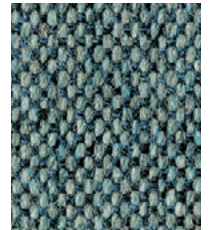
Charing
MLF27



Monument
MLF09



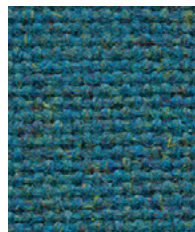
Highgate
MLF33



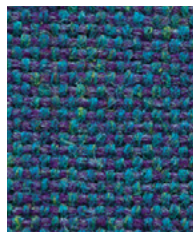
Westminster
MLF22



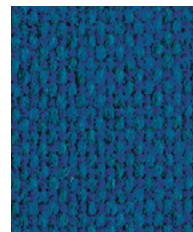
Tufnell
MLF18



Stanmore
MLF37



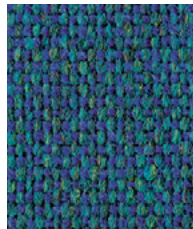
Russell
MLF38



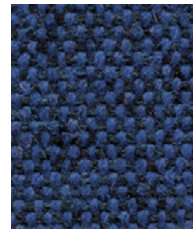
Holborn
MLF05



Farringdon
MLF29



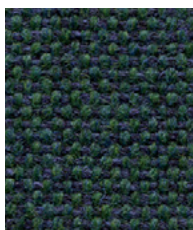
Pimlico
MLF34



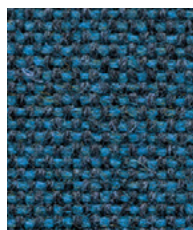
Victoria
MLF19



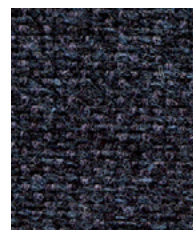
Temple
MLF16



Greenford
MLF32



Brompton
MLF35



Tower
MLF36



Edgware
MLF28



Task seating



Soft seating



Curtains

Cigarette
& Match

Medium Hazard



Environmental



Year guarantee

Main Line Flax is the natural progression of our all-time favourite Main Line Plus fabric, building on our industry-leading bast fibre expertise to create a new inherently flame retardant fabric from sustainable sources. A symbol of purity, wild flax has been used in textiles for thousands of years thanks to its strong, long and smooth fibres found inside the stem of the plant. The fibre is spun into a 70-30 wool flax blend, then fibre-dyed to create beautiful mixture yarns which are woven into interesting solids and cross-colours inspired by the rich tones of rare jewels.



Technical information

UK

Industry Application

Workplace, Education, Hospitality & Leisure

Composition

70% Virgin Wool, 30% Flax

Environment

Certified to the EU Ecolabel
Certified to Indoor Advantage™ Gold
Rapidly renewable and compostable
Made from wool and bast fibre

Width

140 cm minimum

Weight

437 g/m² ±5% (612 g/lin.m ±5%)

Abrasion Resistance*

Heavy duty/10 year guarantee
Independently certified to ≥50,000
Martindale cycles

Flammability

EN 1021 - 1 (cigarette)
EN 1021 - 2 (match)
BS 7176 Low Hazard
BS 5852 Ignition Source 5
BS 7176 Medium Hazard
NF D 60-013
ÖNORM B 3825 & A 3800-1 (58kg/m³
CMHR Foam)
UNI 9175 Classe 1 IM
BS 5867-2: Type B Curtains & Drapes
Note: Flammability performance is dependent on components used. Our certificates show what substrates have been used in our tests. For composite tests customers must ensure their complete furniture meets the necessary standards.

Light Fastness

5 (ISO 105 - B02)

Fastness to Rubbing

Wet: 3, Dry: 4 (ISO 105 - X12)

Cleaning

Vacuum regularly. Professionally dry clean or wipe clean with a damp cloth.

*Abrasion testing produces a wide variability of results even from the same test sample. The independent certificate of ≥50,000 cycles is available on our website or from our customer service team. Internally we specify this product at >35,000 cycles which we believe is realistic for repeatability of testing. Please be aware that abrasion testing alone is not a reliable indicator of the actual wear performance of fabrics. We're so confident in the durability of our products that we provide a robust 10 year guarantee (full details available).

Please note that seam performance is dependent on seam construction and needle and thread type. We recommend that appropriate sewing advice be taken.

Batch to batch variations in shade may occur within commercial tolerances. We reserve the right to alter technical specifications without notice. The Unregistered Design Rights and the Copyright in all designs are the exclusive property of Camira Fabrics Limited.

D

Einsatzbereich

Büro, Bildung, Hotellerie & Gastronomie

Zusammensetzung

70% Schurwolle, 30% Flachs

Umweltfreundlich

Nach Zertifikat EU Ecolabel
Nach Zertifikat Indoor Advantage™ Gold
Schnell erneuerbar und kompostierbar
Mit Wolle und Bastfasern gefertigt

Breite

140 cm nutzbare Breite

Gewicht

437 g/m² ±5% (612 g/ldf.m ±5%)

Scheuerfestigkeit*

Schwerer Objekteinsatz/10 Jahre Garantie
Extern zertifiziert mit ≥50,000
Scheuertouren Martindale

Feuersicherung

EN 1021 - 1 (Zigarettentest)
EN 1021 - 2 (Streichholztest)
BS 7176 Low Hazard
BS 5852 Ignition Source 5
BS 7176 Medium Hazard
NF D 60-013
ÖNORM B 3825 & A 3800-1 (58kg/m³
CMHR Foam)
UNI 9175 Classe 1 IM
BS 5867-2: Type B Curtains & Drapes
Bemerkung: Die Schwerentflammbarkeit hängt von den verwendeten Komponenten ab. Unsere Zertifikate zeigen auf, welche Substrate bei den Tests verwendet wurden. Bei Verbundtests muss sichergestellt sein, daß das komplette Möbel den entsprechenden Standards entspricht.

Lichtechtheit

5 (ISO 105 - B02)

Reibechtheit

Nass: 3, Trocken: 4 (ISO 105 - X12)

Reinigung

Regelmässig absaugen. Professionelle Trockenreinigung. Alternativ dazu mit einem feuchten Tuch abwischen.

*Die Scheuerfestigkeitsprüfung ergibt selbst bei gleichen Testmustern stark abweichende Ergebnisse. Das Zertifikat eines unabhängigen Prüfinstitutes über ≥50,000 Scheuertouren erhalten Sie von unserem Vertriebsinnendienst oder auf unserer Webseite. Intern spezifizieren wir dieses Produkt mit >35,000 Scheuertouren, die in der Serienfertigung als realistisch angenommen werden. Bitte nehmen Sie zur Kenntnis, dass die Scheuerfestigkeitsprüfung allein keine Aussagekraft über die Langlebigkeit eines Bezugsstoffes hat. Wir sind von der Langlebigkeit unserer Produkte überzeugt und bieten daher 10 Jahre Garantie (Details auf Anfrage).

Eine optimale Nahtausreissfestigkeit hängt von der Nahtfahne, der verwendeten Nadel und dem Näh-Garn ab. Wir empfehlen daher Nähversuche durchzuführen.

Handelsübliche Farbabweichungen können auftreten und berechtigen nicht zur Reklamation. Wir behalten uns die Änderung technischer Spezifikationen vor. Die registrierten und nicht registrierten Urheberrechte der Dessinierungen sind ausschliessliches Eigentum der Camira Fabrics Limited.

F

Application industrielle

Lieu de travail, Education, Hôtellerie et loisirs

Composition

70% Laine Vierge, 30% Lin

Écologique

Avec le certificat EU Ecolabel
Certifié à Indoor Advantage™ Gold
Rapidement renouvelable et compostable
Fabriqué avec de la Laine et des fibres originaire de Tiges

Largeur

140 cm minimum

Poids

437 g/m² ±5% (612 g/m.l ±5%)

Résistance à l'abrasion*

Usage intense/garantie 10 ans. Certificat indépendant ≥50,000 cycles Martindale

Flammabilité

EN 1021 - 1 (cigarette)
EN 1021 - 2 (allumette)
BS 7176 Low Hazard
BS 5852 Ignition Source 5
BS 7176 Medium Hazard
NF D 60-013
ÖNORM B 3825 & A 3800-1 (58kg/m³
CMHR Foam)
UNI 9175 Classe 1 IM
BS 5867-2: Type B Curtains & Drapes
Notez: La performance de flammabilité dépend des composantes utilisées. Nos certificats indiquent les substrats utilisés dans nos tests. Pour les tests composites, les clients doivent s'assurer que leurs meubles complets satisfont aux normes nécessaires.

Solidité à la lumière

5 (ISO 105 - B02)

Solidité au Frottement

Mouillé: 3, Sec: 4 (ISO 105 - X12)

Nettoyage

Aspirer régulièrement. Nettoyage à sec professionnel. Autrement, essuyer avec un tissu humide.

*Les tests de résistance à l'abrasion proposent une large variété de résultat final, parfois sur le même échantillon de tissu. Le certificat indépendant de ≥50,000 cycles est disponible sur notre site internet; vous pouvez également contacter notre Service Clients. Nous validons ce produit - en interne - à >35,000 cycles; ce qui est, d'après nous, plus réaliste dans le but d'obtenir une continuité égale des résultats de tests. Merci de noter que l'abrasion seule ne constitue pas un indicateur de confiance dans la performance du tissu à long terme. Nous avons une confiance absolue en nos produits et leur durabilité, c'est pour cela que nous vous offrons une garantie robuste de 10 ans.

Veuillez noter que la performance du joint dépend de sa construction ainsi que de l'aiguille et du type de fil utilisés.

Une variation de couleurs peut provenir (commercialement tolérable). Nous réservons le droit de changer les spécifications techniques sans préavis. Les Droits de Conception non-enregistrés et les droits d'auteur de tous les motifs sont la propriétés exclusives de Camira Fabrics Limited.

ES

Aplicación Industrial

Puesto de Trabajo, Educación, Sector Hotelero & Placer

Composición

70% Lana Virgen, 30% Lino

Ambiental

Certificado con EU Ecolabel
Certificado de Indoor Advantage™ Gold
Rapidamente renovable y compostable
Producido con lana y fibras naturales

Ancho

140 cm mínimo

Peso

437 g/m² ±5% (612 g/lin.m ±5%)

Resistencia a la abrasión*

Garantía de 10 años con uso intenso independientemente del certificado de ≥50,000 Ciclos Martindale

Inflamabilidad

EN 1021 - 1 (cigarillo)
EN 1021 - 2 (cerilla)
BS 7176 Low Hazard
BS 5852 Ignition Source 5
BS 7176 Medium Hazard
NF D 60-013
ÖNORM B 3825 & A 3800-1 (58kg/m³
CMHR Foam)
UNI 9175 Classe 1 IM
BS 5867-2: Type B Curtains & Drapes
Nota: El rendimiento de la inflamabilidad depende de los componentes usados. Nuestros certificados muestran que substratos se han usado en nuestros tests. Para tests compuestos nuestros clientes deben asegurar si sus muebles cumplen la normativa al uso.

Solidez a la luz

5 (ISO 105 - B02)

Solidez al rozamiento

Húmedo: 3, Seco: 4 (ISO 105 - X12)

Limpieza

Limpiar con aspirador con regularidad. Limpiar en seco, o bien lavar con un paño húmedo.

*Los Test de Abrasión producen unos resultados muy variables incluso con la misma muestra. El certificado de ≥50,000 ciclos Martindale está disponible en nuestra web o se puede pedir al Departamento Comercial. Internamente certificamos este producto >35,000 ciclos, que pensamos que es lo más realista posible en este caso, con una repetición de resultados tan dispares. Tengan en cuenta que el Test de Abrasión solo no es un indicador fiable sobre el desgaste de un tejido. De hecho, estamos tan convencidos en la durabilidad de nuestros tejidos, que ofrecemos una garantía de 10 años (detalles completos disponibles).

Tenga en cuenta que el rendimiento de la costura depende de la construcción de la costura, además de la aguja y del tipo de rosca. Le recomendamos que se aconsejen para coser la costura.

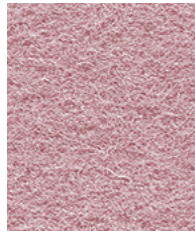
Las variaciones de lote a lote en la sombra se puede producir dentro de tolerancias comerciales. Nos reservamos el derecho a efectuar modificaciones técnicas sin previo aviso. Los derechos sobre los diseños no registrados y los derechos de autor en todos los diseños son propiedad exclusiva de Camira Fabrics Limited.

Blazer

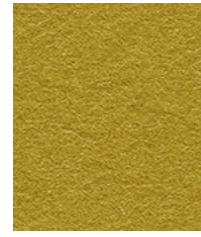
camira



Dartmouth
CUZ2Q



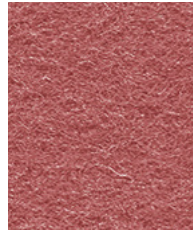
Stanford
CUZ2R



Eynesbury
CUZ2W



Fairfield
CUZ47



Barlborough
CUZ3D



Wesley
CUZ82



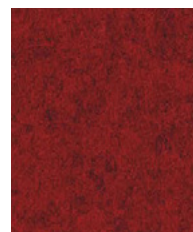
St Andrews
CUZ86



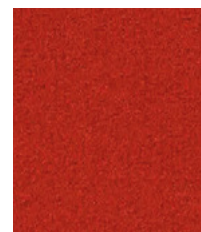
Oriel
CUZ18



Barnard
CUZ2S



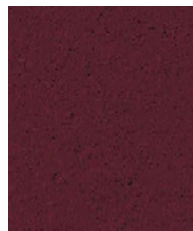
Handcross
CUZ63



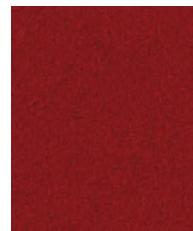
Goldsmith
CUZ39



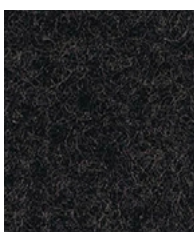
Trevelyan
CUZ31



Magdalene
CUZ21



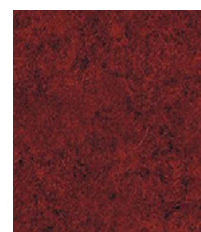
Wellington
CUZ13



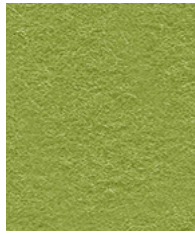
Kingsmead
CUZ67



Holyoke
CUZ2T



Edge Hill
CUZ90



Penola
CUZ2X



Tyndale
CUZ2Y



Woodcroft
CUZ2Z



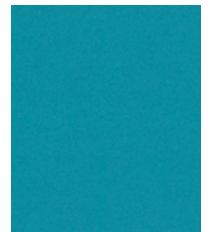
Dunhurst
CUZ58



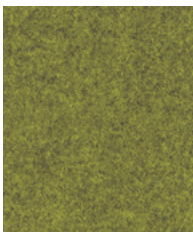
Latymer
CUZ33



Newport
CUZ1L



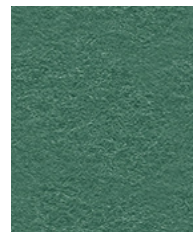
Aston
CUZ02



Ulster
CUZ1F



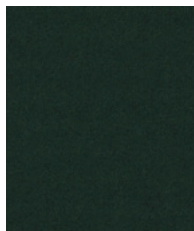
Bryanston
CUZ53



Montcrest
CUZ3A



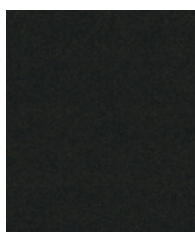
Camphill
CUZ1K



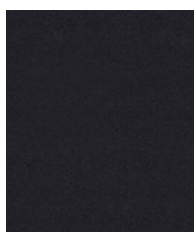
Cardiff
CUZ1N



Abertay
CUZ3B



Glasgow
CUZ1M

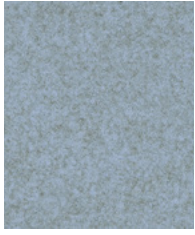


Winchester
CUZ12



Hull
CUZ1P

Photographic fabric scans are not colour accurate. Always request actual fabric samples before ordering.



Plymouth
CUZ1R



Sheffield
CUZ1T



Scottsdale
CUZ3E



Marymount
CUZ3C



Vassar
CUZ2U



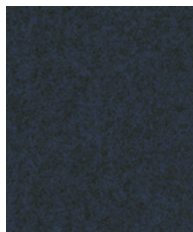
Manchester
CUZ1V



Silverdale
CUZ28



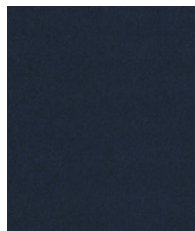
Knightsbridge
CUZ26



Newcastle
CUZ1W



Surrey
CUZ1E



Edinburgh
CUZ1Y



Aberlour
CUZ1J



Silcoates
CUZ30



Oxford
CUZ09



Glenalmond
CUZ62



Bromsgrove
CUZ35



Napier
CUZ08

