

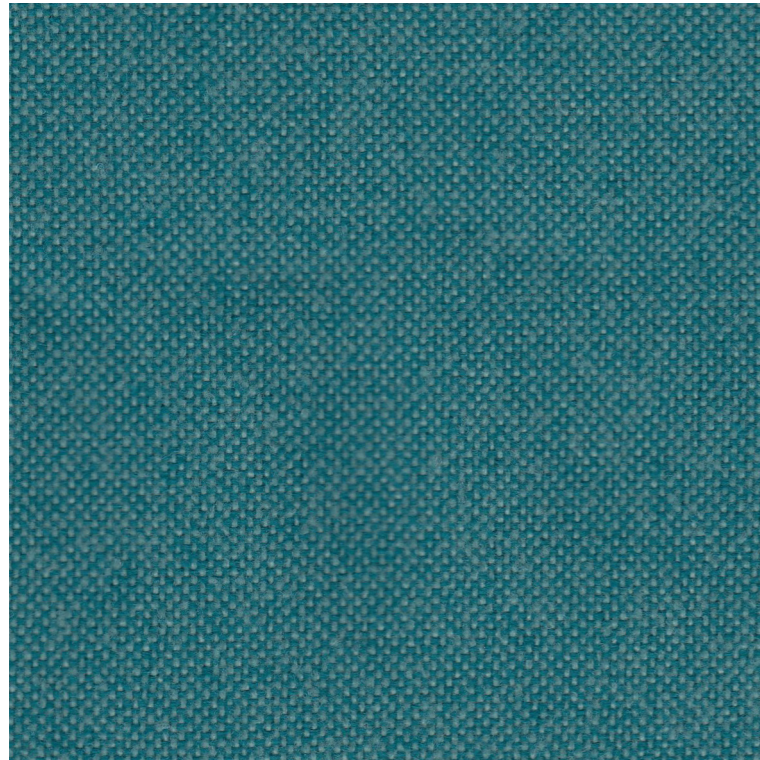


FP collection

# Stofkaart

Belle, Cepe, Doc, Hat, Mani, S75, Sharp, Strike

*Meubels met een glimlach*

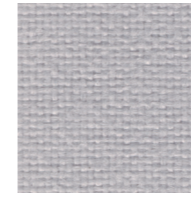


9609

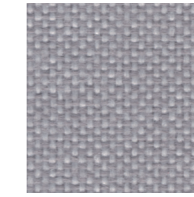
**JET**

**Tipologia:** Trevira  
**Composizione:** 100% poliestere (Trevira cs)  
**Larghezza:** 140 cm  
**Peso:** 365 g/mtl  
**Pulizia e manutenzione:** contattare il fornitore al sito [www.fidivi.com](http://www.fidivi.com).

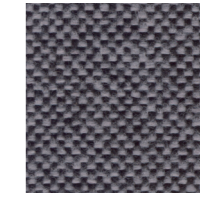
**Type:** Trevira  
**Composition:** 100% polyester (Trevira cs)  
**Width:** 140 cm  
**Weight:** 365 g/lm  
**Cleaning and maintenance:** contact the supplier through website [www.fidivi.com](http://www.fidivi.com).



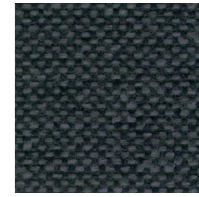
8001



9803



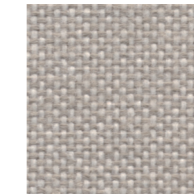
9294



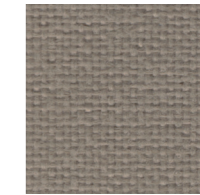
9806



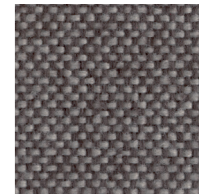
1001



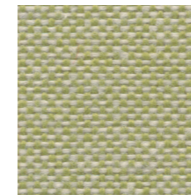
9110



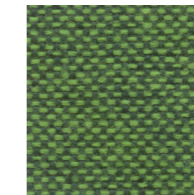
2024



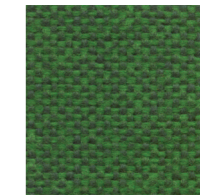
9109



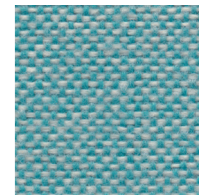
9701



9702



9704



9610

**Resistenza al fuoco / Flame resistance**

EN 1021-1/2  
 BS 5852-5  
 BS 7176 (Medium)  
 CA TB 117-2013  
 NFPA 260 (1)  
 DIN 4102-1 (B1)  
 ÖNORM A3800-1 (B1-Q1)  
 NF D 60-013  
 NF P 92-507 (M1)  
 UNI 9175 (1IM)  
 IMO FTP 307-8

**Solidità alla luce / Light fastness**

UNI EN ISO 105-B02 (6)

**Resistenza all'abrasione / Abrasion resistance**

UNI EN ISO 12947-2 (≈ 65.000 Martindale)

**Solidità allo sfregamento / Fastness to rubbing**

UNI EN ISO 105-X12 (a secco/dry rubbing 4-5)  
 UNI EN ISO 105-X12 (a umido/wet rubbing 4-5)

**Pilling**

UNI EN ISO 12945-2 (5)

**Note**

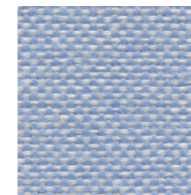
Leggere differenze di colore fra una partita e l'altra sono da considerarsi normali.

Consultare sempre i siti dei produttori per verificare eventuali aggiornamenti sui test.

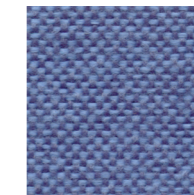
**Notes**

Slight colour differences between lots must be considered normal.

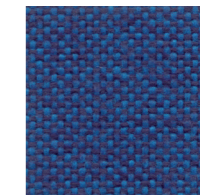
Always consult manufacturers' websites to check for any test updates.



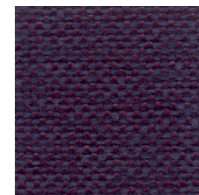
9600



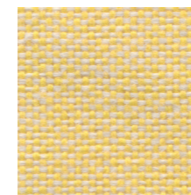
9601



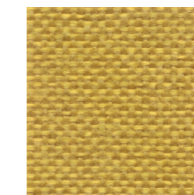
9603



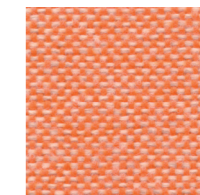
9607



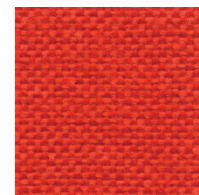
9302



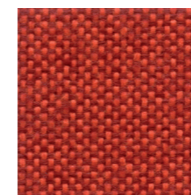
9304



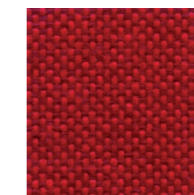
9301



9403



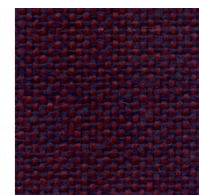
9402



9401



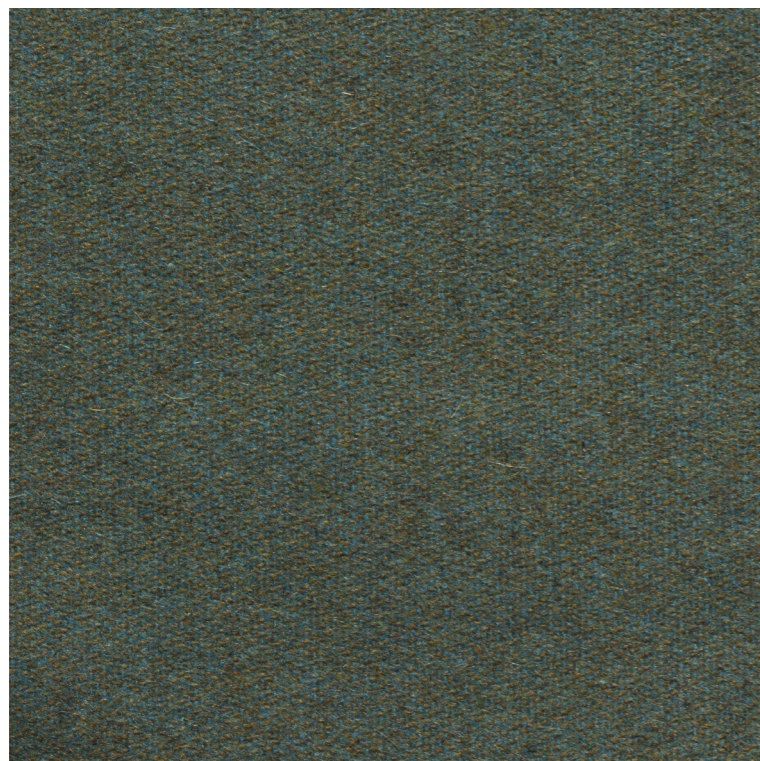
4018



9501

**FIDIVI\***

For further information  
[fidivi.com](http://fidivi.com)

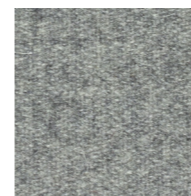


042

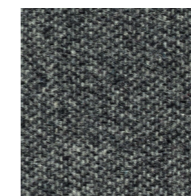
**ST. MORITZ**

**Tipologia:** lana  
**Composizione:** 80% lana, 20% poliammide  
**Larghezza:** 140 cm  
**Peso:** 440 g/mtl  
**Pulizia e manutenzione:** contattare il fornitore al sito [www.linterno.it](http://www.linterno.it).

**Type:** wool  
**Composition:** 80% wool, 20% polyamide  
**Width:** 140 cm  
**Weight:** 440 g/lm  
**Cleaning and maintenance:** contact the supplier through website [www.linterno.it](http://www.linterno.it).



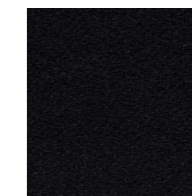
155



159



162



163



001



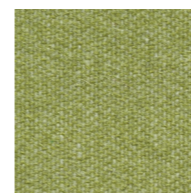
005



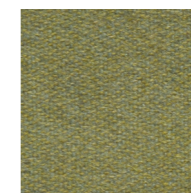
025



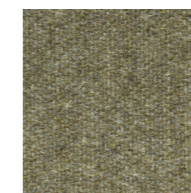
081



047



034



038



099

**Resistenza al fuoco / Flame resistance**  
 EN 1021-1/2  
 IMO FTP 307-8

**Solidità alla luce / Light fastness**  
 UNI EN ISO 105-B02 (5)

**Resistenza all'abrasione / Abrasion resistance**  
 UNI EN ISO 12947-2 (≈ 80.000 Martindale)

**Solidità allo sfregamento / Fastness to rubbing**  
 UNI EN ISO 105-X12 (a secco/dry rubbing 4-5)  
 UNI EN ISO 105-X12 (a umido/wet rubbing 4)

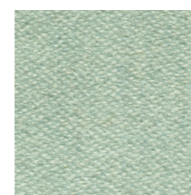
**Pilling**  
 UNI EN ISO 12945-2 (3)

**Note**  
 Leggere differenze di colore fra una partita e l'altra sono da considerarsi normali.

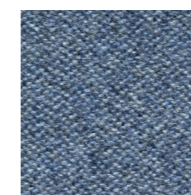
Consultare sempre i siti dei produttori per verificare eventuali aggiornamenti sui test.

**Notes**  
 Slight colour differences between lots must be considered normal.

Always consult manufacturers' websites to check for any test updates.



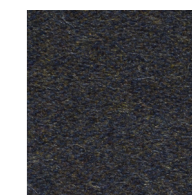
130



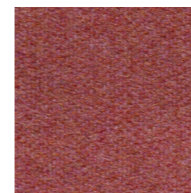
142



148



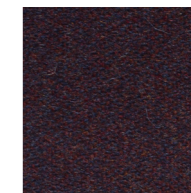
091



108



075



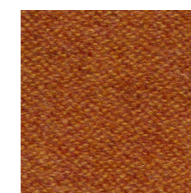
078



122



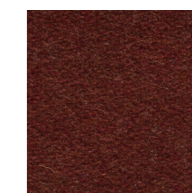
059



064



069



067



149

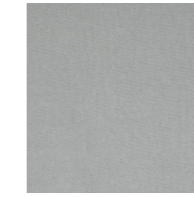
**SUPERB**

**Tipologia:** velluto  
**Composizione:** 100% poliestere  
**Larghezza:** 140 cm  
**Peso:** 400 g/m2  
**Pulizia e manutenzione:** contattare il fornitore al sito [www.flukso.it](http://www.flukso.it).

**Type:** velvet  
**Composition:** 100% polyester  
**Width:** 140 cm  
**Weight:** 400 g/m2  
**Cleaning and maintenance:** contact the supplier through website [www.flukso.it](http://www.flukso.it).



153



152



151



147



137



136



134



131



130



126



127



128

**Resistenza al fuoco / Flame resistance**

UNI 8456 – 9174 CLASSE 1  
 UNI 9175 CLASSE 1IM  
 EN 1021-1  
 EN 1021-2  
 BS 5852 CRIB 5  
 DIN 4102 B1  
 NF P 92 503-507 M1  
 TB 117:2013  
 UNI EN 13773:2004 CLASSE 1  
 NFPA 701:2015

**Solidità alla luce / Light fastness**

UNI EN ISO 105-B02 (≥5)

**Resistenza all'abrasione / Abrasion resistance**

UNI EN ISO 12947-2 (≈ 60.000 Martindale)

**Solidità allo sfregamento / Fastness to rubbing**

UNI EN ISO 105-X12 (a secco/dry rubbing 4)  
 UNI EN ISO 105-X12 (a umido/wet rubbing 4)

**Pilling**

UNI EN ISO 12945-2 (5)

**Note**

Leggere differenze di colore fra una partita e l'altra sono da considerarsi normali.

Consultare sempre i siti dei produttori per verificare eventuali aggiornamenti sui test.

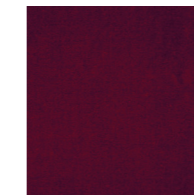
**Notes**

Slight colour differences between lots must be considered normal.

Always consult manufacturers' websites to check for any test updates.



123



119



118



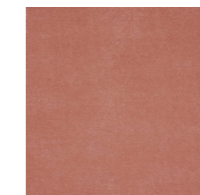
117



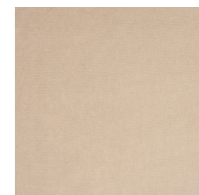
112



110



114



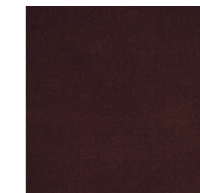
104



103



143



145



148



For further information  
[flukso.it](http://flukso.it)

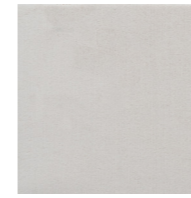


0530

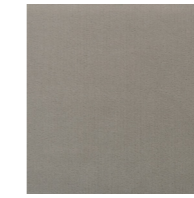
**NO\_FIRE**

**Tipologia:** velluto  
**Composizione:** 100% trevira  
**Larghezza:** 140 cm  
**Peso:** 540/580 g/mtl  
**Pulizia e manutenzione:** contattare il fornitore al sito [www.lopificio.it](http://www.lopificio.it).

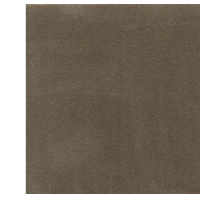
**Type:** velvet  
**Composition:** 100% trevira  
**Width:** 140 cm  
**Weight:** 540/580 g/lm  
**Cleaning and maintenance:** contact the supplier through website [www.lopificio.it](http://www.lopificio.it).



0010



0312



0257



0247



0219



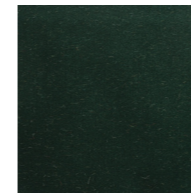
0236



0147



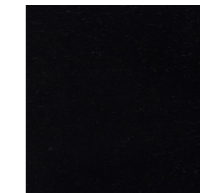
0618



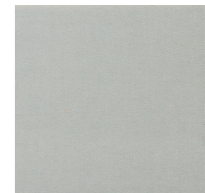
0628



0246



0900



0310

**Resistenza al fuoco / Flame resistance**  
 BS 5852-5  
 CA TB 117-2013  
 UNI 9175 (1IM)

**Solidità alla luce / Light fastness**  
 UNI EN ISO 105-B02 (6-7)

**Resistenza all'abrasione / Abrasion resistance**  
 UNI EN ISO 12947-2 (≈ 140.000 Martindale)

**Solidità allo sfregamento / Fastness to rubbing**  
 UNI EN ISO 105-X12 (a secco/dry rubbing 4-5)  
 UNI EN ISO 105-X12 (a umido/wet rubbing 4-5)

**Pilling**  
 UNI EN ISO 12945-2 (5)

**Note**  
 Leggere differenze di colore fra una partita e l'altra sono da considerarsi normali.

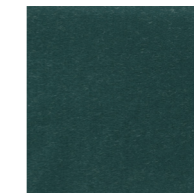
Consultare sempre i siti dei produttori per verificare eventuali aggiornamenti sui test.

**Notes**  
 Slight colour differences between lots must be considered normal.

Always consult manufacturers' websites to check for any test updates.



0719



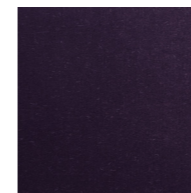
0720



0715



0837



0574



0505



0527



0513



0425



111

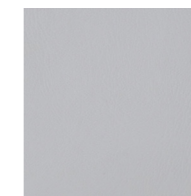
**MAGNUM**

**Tipologia:** spalmato  
**Composizione:** 88% polivinil cloruro, 7% poliestere, 4% cotone, 1% poliuretano  
**Larghezza:** 140 cm  
**Peso:** 715 g/m2  
**Pulizia e manutenzione:** contattare il fornitore al sito [www.abitex.eu](http://www.abitex.eu).

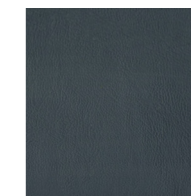
**Type:** eco-leather  
**Composition:** 88% polyvinyl chloride, 7% polyester, 4% cotton, 1% polyurethane  
**Width:** 140 cm  
**Weight:** 715 g/m2  
**Cleaning and maintenance:** contact the supplier through website [www.abitex.eu](http://www.abitex.eu).



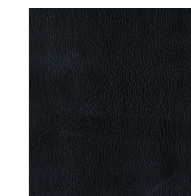
105



603



602



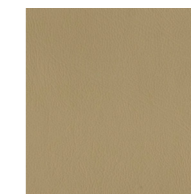
200



100



103



400



406



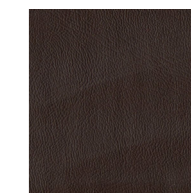
503



407



404



405



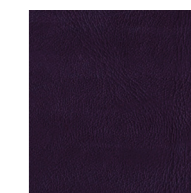
310



304



302



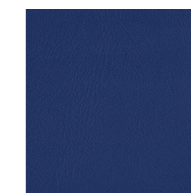
313



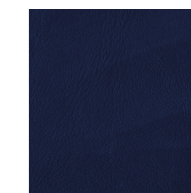
001



706



701



700



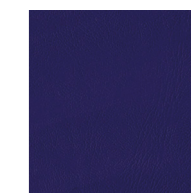
500



804



803



002

**Resistenza al fuoco / Flame resistance**

EN 1021-1/2  
 BS 5852-0/1/5(\*)  
 CA TB 117-2013  
 DIN 4102-1 (B1)(\*)  
 NF P 92-507 (M1)(\*)  
 UNI 9175 (IIM)  
 IMO FTP 307-8

**Solidità alla luce / Light fastness**

UNI EN ISO 105-B02 (≥7)

**Resistenza all'abrasione / Abrasion resistance**

UNI EN ISO 12947-2 (≈ 200.000 Martindale)

**Solidità allo sfregamento / Fastness to rubbing**

UNI EN ISO 105-X12 (a secco/dry rubbing ≥5)  
 UNI EN ISO 105-X12 (a umido/wet rubbing ≥5)

\* per passare il test è necessario un pre-trattamento.

\* to pass this test, flame retardant treatment is necessary.

**Note**

Leggere differenze di colore fra una partita e l'altra sono da considerarsi normali.

Consultare sempre i siti dei produttori per verificare eventuali aggiornamenti sui test.

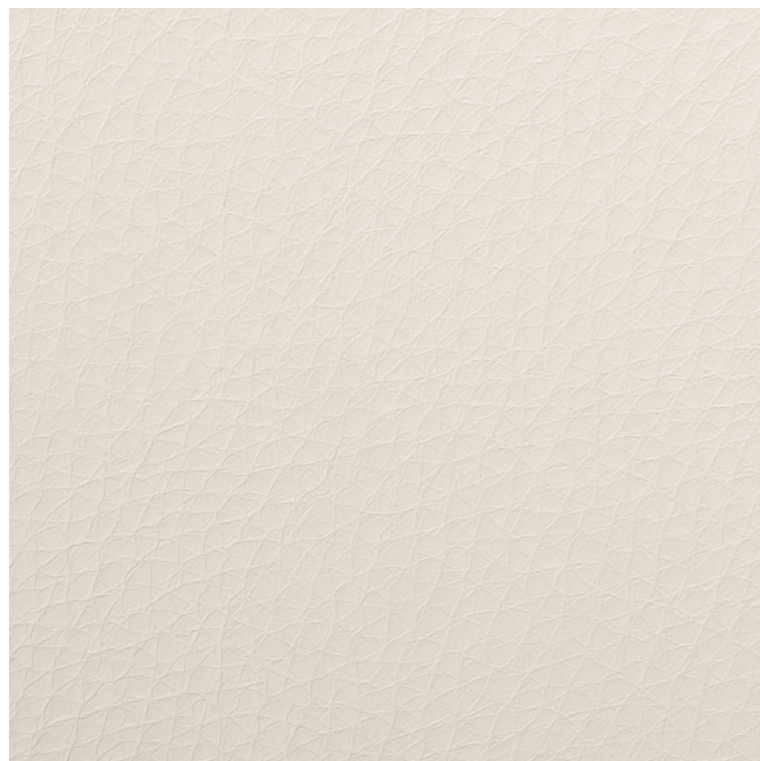
**Notes**

Slight colour differences between lots must be considered normal.

Always consult manufacturers' websites to check for any test updates.

**ABITEX**

For further information  
[abitex.eu](http://abitex.eu)



6702

**DOLCE**

**Tipologia:** spalmato  
**Composizione:** 100% poliuretano  
**Larghezza:** 137 cm  
**Peso:** 370 g/m<sup>2</sup>  
**Pulizia e manutenzione:** contattare il fornitore al sito [www.spradling.eu](http://www.spradling.eu).

**Type:** eco-leather  
**Composition:** 100% polyurethane  
**Width:** 137 cm  
**Weight:** 370 g/m<sup>2</sup>  
**Cleaning and maintenance:** contact the supplier through website [www.spradling.eu](http://www.spradling.eu)



6727



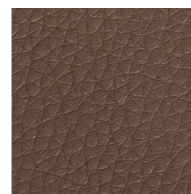
6701



6706



6708



6712



6709



6713



6714



6726



6728

**Resistenza al fuoco / Flame resistance**

EN 1021-1/2  
 CA TB 117-2013  
 IMO FTP 307-8

**Resistenza all'abrasione / Abrasion resistance**

UNI EN ISO 12947-2 (≈ 300.000 Martindale)

**Note**

Leggere differenze di colore fra una partita e l'altra sono da considerarsi normali.

Consultare sempre i siti dei produttori per verificare eventuali aggiornamenti sui test.

**Notes**

*Slight colour differences between lots must be considered normal.*

*Always consult manufacturers' websites to check for any test updates.*





4004

**SILVERTEX**

**Tipologia:** spalmato  
**Composizione:** 100% vinile  
**Larghezza:** 137 cm  
**Peso:** 685 g/m2  
**Pulizia e manutenzione:** contattare il fornitore al sito [www.spradling.eu](http://www.spradling.eu).

**Type:** eco-leather  
**Composition:** 100% vinyl  
**Width:** 137 cm  
**Weight:** 685 g/m2  
**Cleaning and maintenance:** contact the supplier through website [www.spradling.eu](http://www.spradling.eu)

**Resistenza al fuoco / Flame resistance**

EN 1021-1/2  
 CA TB 117-2013  
 NF P 92-507 (M2)  
 DIN 4102-1 (B2)  
 ÖNORM A3800-1 (B1-Q1)  
 UNI 9175 (1IM)  
 IMO FTP 307-8  
 FAR/JAR 25.853

**Resistenza all'abrasione / Abrasion resistance**

UNI EN ISO 12947-2 (≈ 300.000 Martindale)

**Note**

Leggere differenze di colore fra una partita e l'altra sono da considerarsi normali.

Consultare sempre i siti dei produttori per verificare eventuali aggiornamenti sui test.

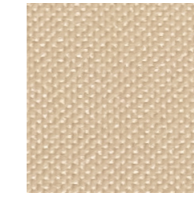
**Notes**

Slight colour differences between lots must be considered normal.

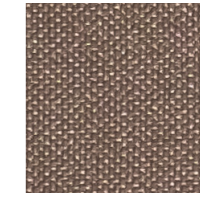
Always consult manufacturers' websites to check for any test updates.



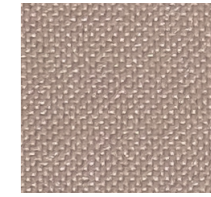
1077



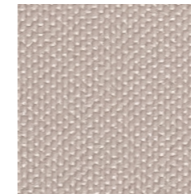
1051



0009



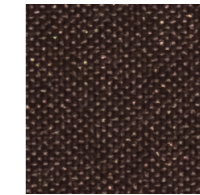
0002



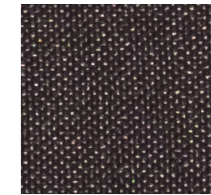
0001



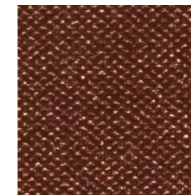
1010



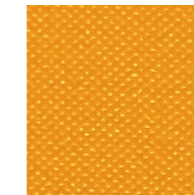
0005



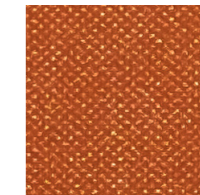
4024



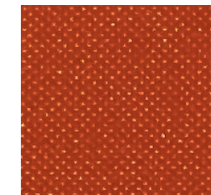
0073



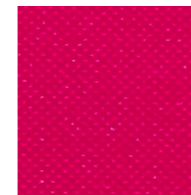
6065



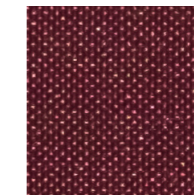
2003



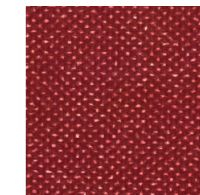
6061



7002



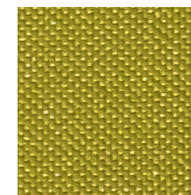
6004



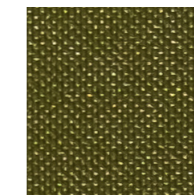
2064



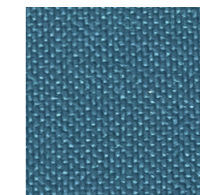
2011



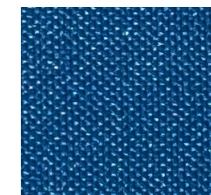
5008



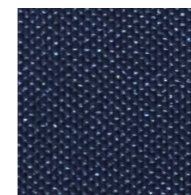
5020



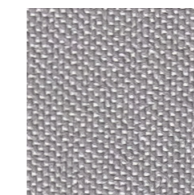
3001



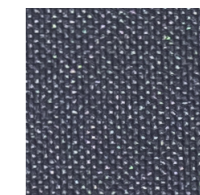
3066



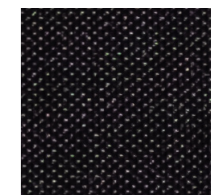
3007



4001



4002



9001







8032

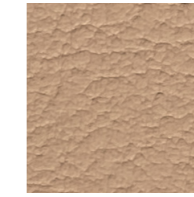
**VALENCIA**

**Tipologia:** spalmato  
**Composizione:** 100% vinile  
**Larghezza:** 137 cm  
**Peso:** 650 g/m2  
**Pulizia e manutenzione:** contattare il fornitore al sito [www.spradling.eu](http://www.spradling.eu).

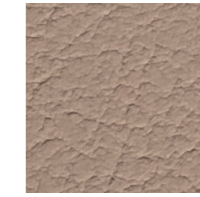
**Type:** eco-leather  
**Composition:** 100% vinyl  
**Width:** 137 cm  
**Weight:** 650 g/m2  
**Cleaning and maintenance:** contact the supplier through website [www.spradling.eu](http://www.spradling.eu)



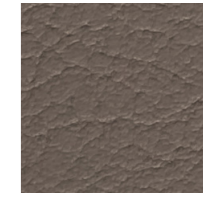
1048



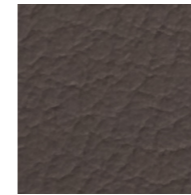
1050



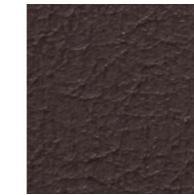
0034



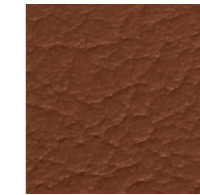
5002



4041



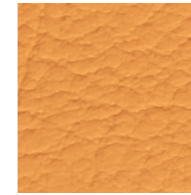
0020



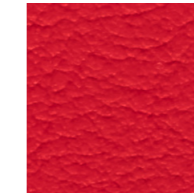
2115



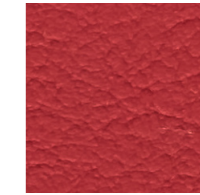
2111



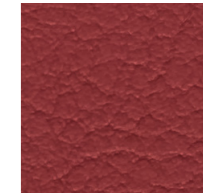
6013



2075



2074



2062



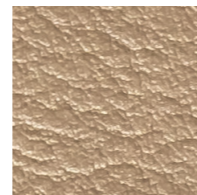
8020



1020



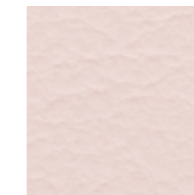
4020



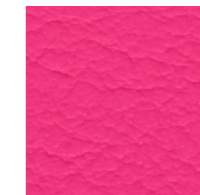
6020



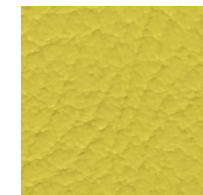
2002



2113



2021



2110

**Resistenza al fuoco / Flame resistance**

EN 1021-1/2  
 CA TB 117-2013  
 NF P 92-507 (M2)  
 DIN 4102-1 (B2)  
 ÖNORM A3800-1 (B1-Q1)  
 UNI 9175 (1IM)  
 IMO FTP 307-8  
 FAR/JAR 25.853

**Resistenza all'abrasione / Abrasion resistance**

UNI EN ISO 12947-2 (≈ 300.000 Martindale)

**Note**

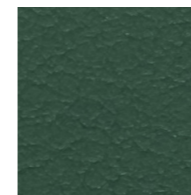
Leggere differenze di colore fra una partita e l'altra sono da considerarsi normali.

Consultare sempre i siti dei produttori per verificare eventuali aggiornamenti sui test.

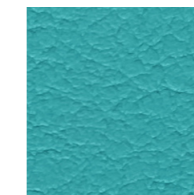
**Notes**

Slight colour differences between lots must be considered normal.

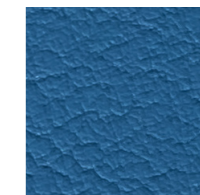
Always consult manufacturers' websites to check for any test updates.



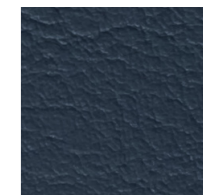
5069



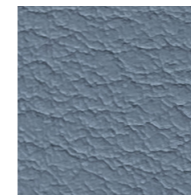
5057



3069



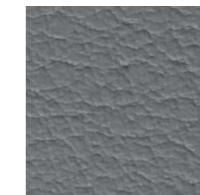
2108



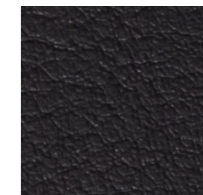
4042



4040

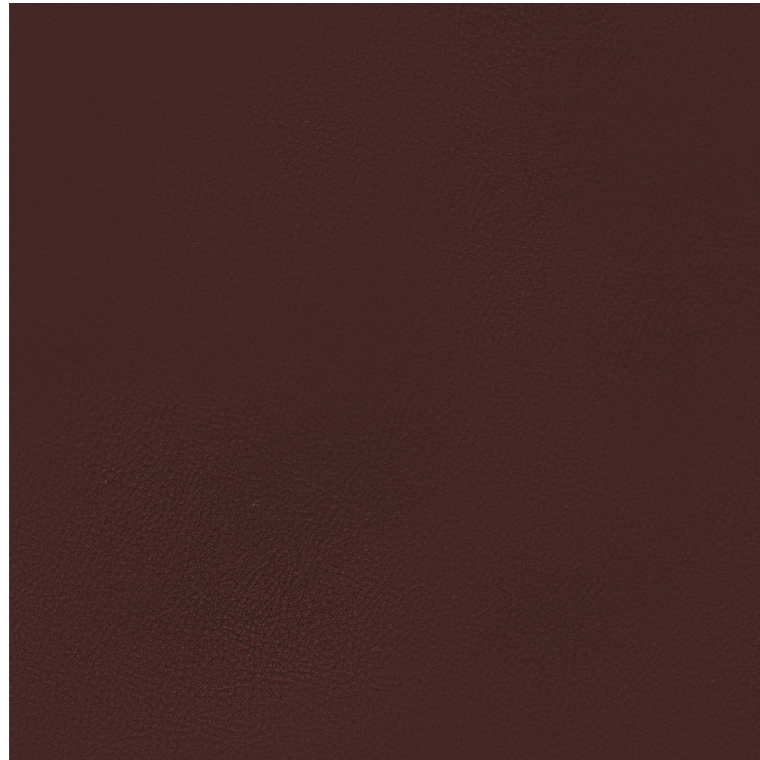


4043



9035





15

**EVE**

**Tipologia:** spalmato biobased  
**Composizione:** 40% PVC, 40% componenti vegetali, 20% cotone biologico.

**Larghezza:** 140 cm

**Peso:** 650 g/m<sup>2</sup>

**Pulizia e manutenzione:** contattare il fornitore al sito [www.flukso.it](http://www.flukso.it).

**Type:** bio-based eco-leather

**Composition:** 40% PVC, 40% plant components, 20% organic cotton.

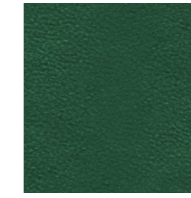
**Width:** 140 cm

**Weight:** 650 g/m<sup>2</sup>

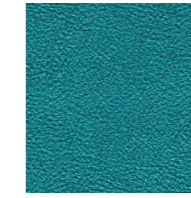
**Cleaning and maintenance:** contact the supplier through website [www.flukso.it](http://www.flukso.it).



1



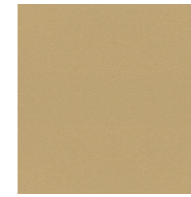
5



6



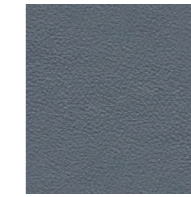
7



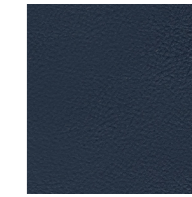
8



10



11



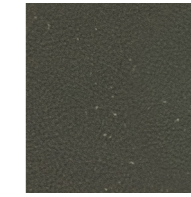
12



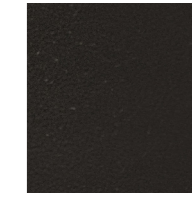
13



14



17



18

**Resistenza al fuoco / Flame resistance**

EN 1021-1/2  
 BS 5852-5  
 CA TB 117-2013  
 NF P 92-507 (M2)  
 UNI 9175 (1IM)

**Solidità alla luce / Light fastness**

UNI EN ISO 105-B02 (6)

**Resistenza all'abrasione / Abrasion resistance**

UNI EN ISO 12947-2 (≈ 100.000 Martindale)

**Solidità allo sfregamento / Fastness to rubbing**

UNI EN ISO 105-X12 (a secco/dry rubbing 5)  
 UNI EN ISO 105-X12 (a umido/wet rubbing 5)

**Note**

Leggere differenze di colore fra una partita e l'altra sono da considerarsi normali.

Consultare sempre i siti dei produttori per verificare eventuali aggiornamenti sui test.

**Notes**

Slight colour differences between lots must be considered normal.

Always consult manufacturers' websites to check for any test updates.



For further information  
[flukso.it](http://flukso.it)



820

**LEATHER**

**Tipologia:** pelle  
**Composizione:** 100% pelle  
**Pulizia e manutenzione:** per pulire macchie o gocce di liquido asciugare delicatamente l'area interessata con un panno inumidito d'acqua tiepida. Fare attenzione a non bagnare eccessivamente l'area, altrimenti tamponare ulteriormente con un panno asciutto. Consigliamo di non strofinare mai la superficie troppo energicamente.

**Type:** leather  
**Composition:** 100% leather  
**Cleaning and maintenance:** to clean stains or drops of liquid, gently wipe the affected area gently with a cloth dampened with warm water. Be careful not to wet the area excessively, otherwise dab with a dry cloth. We recommend never rubbing the surface too hard.

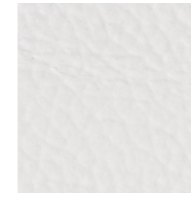
**Resistenza al fuoco / Flame resistance**  
 BS 5852-0/1  
 CA TB 117-2013  
 IMO FTP 307-8

**Solidità alla luce / Light fastness**  
 UNI EN ISO 105-B02 (8)

**Solidità allo sfregamento / Fastness to rubbing**  
 UNI EN ISO 11640 (a secco/dry rubbing 4-5)  
 UNI EN ISO 11640 (a umido/wet rubbing 4-5)

**Note**  
 Leggère differenze di colore fra una partita e l'altra sono da considerarsi normali.

**Notes**  
 Slight colour differences between lots must be considered normal.



810



872



812



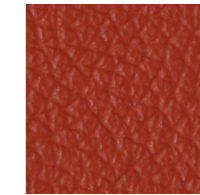
813



930



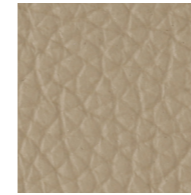
931



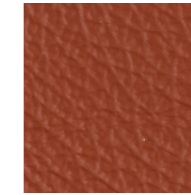
840



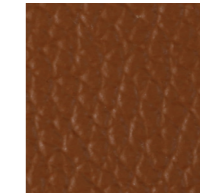
844



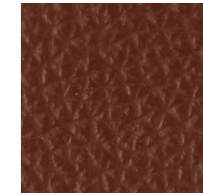
826



841



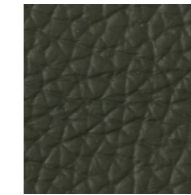
823



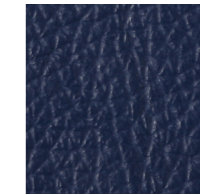
822



824



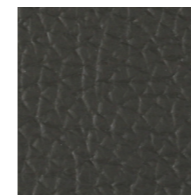
833



856



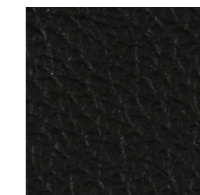
859



858



825



860

**FIELD 2**

Trevira (100% fibra di poliestere)  
Trevira (100% polyester fiber)

**PATIO**

Trevira (100% fibra di poliestere)  
Trevira (100% polyester fiber)

**REMIX 3**

Lana (90% lana, 10% nylon)  
Wool (90% wool, 10% nylon)

**RE-WOOL**

Lana (45% lana vergine, 45% lana riciclata, 10% nylon)  
Wool (45% new wool, 45% recycled wool, 10% nylon)

**HERO**

lana (96% lana vergine, 4% nylon)  
Wool (96% new wool, 4% nylon)

**CANVAS 2**

lana (90% lana vergine, 10% nylon)  
Wool (90% new wool, 10% nylon)

**STEELCUT TRIO 3**

Lana (90% lana vergine pettinata, 10% nylon)  
Wool (90% worsted new wool, 10% nylon)

**VIDAR 3**

Lana (94% lana vergine, 6% nylon)  
Wool (94% new wool, 6% nylon)

**DIVINA MELANGE 3**

lana (100% lana vergine)  
Wool (100% new wool)

**GENTLE 2**

Lana (60% lana, 20% polimmidica, 20% poliestere)  
Wool (60% wool, 20% polyamide, 20% polyester)

**HARALD 3**

Velluto (100% cotone)  
Velvet (100% cotton)

	DIVINA MELANGE 3	STEELCUT TRIO 3	REMIX 3	RE-WOOL	HERO	CANVAS 2	FIELD 2	VIDAR 3	PATIO	GENTLE 2	HARALD 3
EN 1021-1/2	●	●	●	●	●	●	●	●	●	●	●
BS 5852	0/1/5	0/1/3/5(*)	0/1/3/5(*)	0/1/3/5(*)	0/1/5(*)	0/1/3/5(*)	5	2/3/5(*)	0/1/5	0/1	
CAT B 117-2013	●	●	●	●	●	●	●	●	●	●	
DIN 4102-1							B1	B2	B1	B2	
NF P 92-507							M1		M1		
NFD 60-013	●	●	●	●	●	●		●	●		
ÖNORM A3800-1	B1-Q1	B1-Q1	B1-Q1	B1-Q1		B1-Q1	B1-Q1	B1-Q1	B1-Q1		
UNI 9175	1IM	1IM	1IM	1IM	1IM	1IM	1IM	1IM	1IM		
IMO FTP 307-8	●	●	7(*)/8	●	7(*)/8	●	●	●	●	●	
FAR/JAR 25.853							●				
NFPA 260	1	1	1			1					
AS.NZS 1530.3	●	●	●	●		●					●
AS.NZS 3837		2	2		2						1
<b>Solidità alla luce</b>											
<b>Light fastness</b>	5-7	5-7	6-7	5-7	5-7	6-7	5-7	5-7	7	6-7	5-6
UNI EN ISO 105-B02											
<b>Resistenza all'abrasione</b>											
<b>Abrasion resistance</b>											
UNI EN ISO 12947-2	≈ 45.000	100.000	100.000	100.000	≈ 45.000	100.000	≈ 80.000	100.000	50.000	≈ 90.000	100.000
Martindale											
<b>Solidità allo sfregamento</b>											
<b>Fastness to rubbing</b>											
UNI EN ISO 105-X12	secco/ dry rubbing	4-5	4-5	4-5	4-5	4-5			4-5	4-5	
	umido/ wet rubbing	3-5	4-5	4-5	4-5	4-5			4-5	4-5	
<b>Pilling</b>											
UNI EN ISO 12945-2		3	4	4	4	3-4	4	4-5	4	4-5	4-5
<b>Uso</b>											
<b>Use</b>	interno/ indoor	●	●	●	●	●	●	●		●	●
	esterno/ outdoor								●		

**Pulizia e manutenzione:** contattare il fornitore al sito kvadrat.dk. **Cleaning and maintenance:** contact the supplier through kvadrat.dk  
\* per passare il test è necessario un pre-trattamento. \*To pass this test flame retardant treatment is necessary.